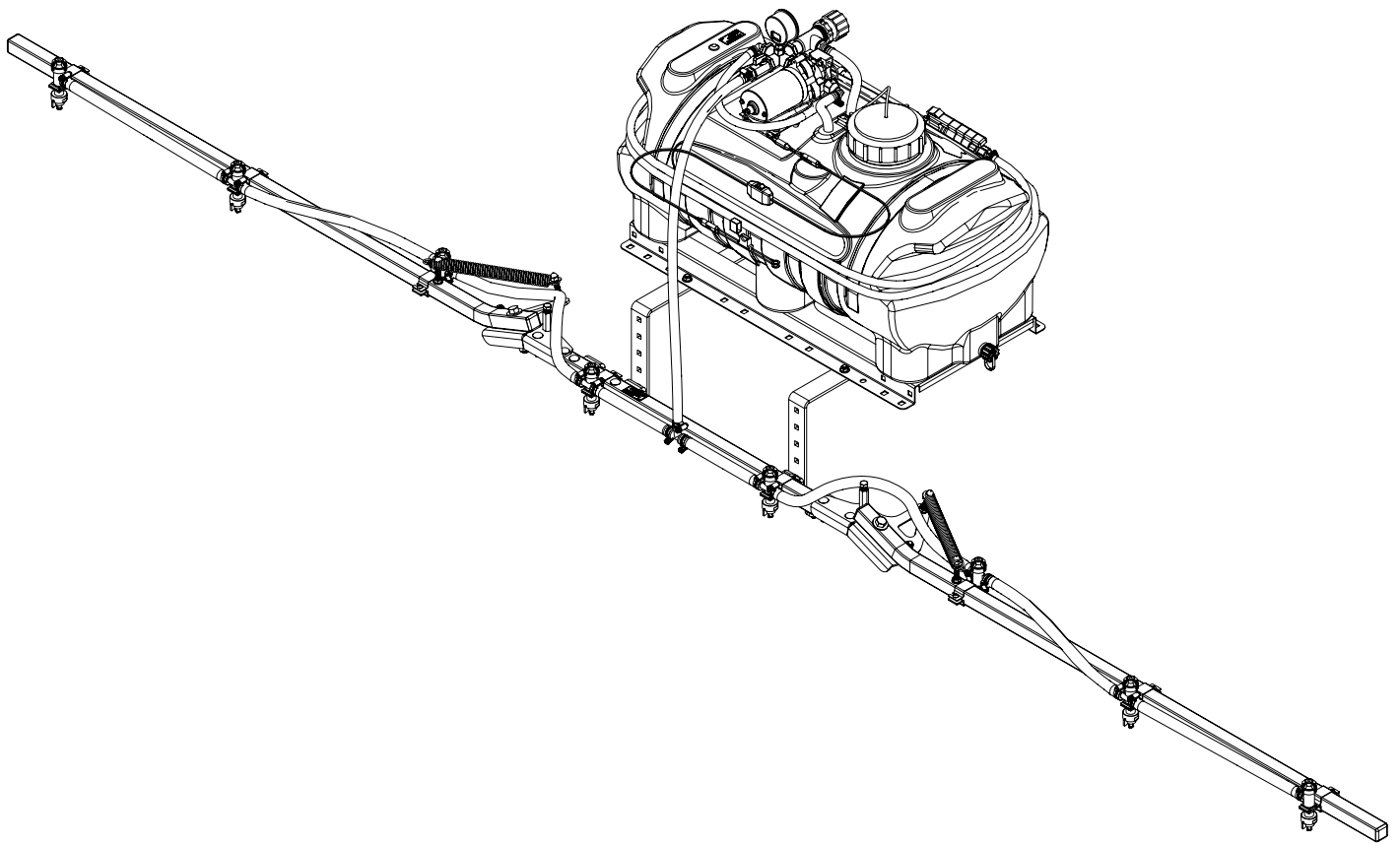




# Owner's Manual

## 25 Gallon ATV Sprayer Model ATX25



Manufactured by PBZ LLC  
A Paul B Zimmerman Inc. Company  
[www.CropCareEquipment.com](http://www.CropCareEquipment.com)

Form: ATX25OM  
Rev. B Date: 9/21



# Table Of Contents

Identification of Machine .....	3	Following Operation .....	14
Specifications.....	3	Maintenance Instructions .....	14
Introduction .....	4	Routine Maintenance.....	14
Safety .....	4	Winterizing your Sprayer .....	15
Signal Words.....	4	Troubleshooting .....	15
General Guidelines.....	5	Breakdowns and Parts Lists .....	16
Before Operation .....	6	Base Unit Breakdown .....	16
During Operation .....	6	Base Unit Parts List.....	17
Following Operation .....	6	Shurflo® Pump Breakdown & Parts List .....	18
Pump Safety Precautions.....	6	Relief Valve Breakdown & Parts List .....	18
Installation .....	9	CropCare® Limited Warranty .....	19
Base Unit.....	9	Ordering Parts .....	19
Wiring Harness .....	10		
Calibrating the Sprayer.....	11		
1. Calculating the Speed.....	11		
2. Determining Nozzle Size/Using Calibration Chart.....	11		
3. Adjusting the Sprayer Pressure.....	12		
Boom Calibration Chart.....	12		
Boomless Nozzle Chart.....	12		
Operating Instructions .....	13		
Spraying with the Boom .....	13		
Spraying with the Spray Gun .....	13		

## Identification of Machine

- Model #'s: ATX25
- The model number and revision identification decal is located on top of the tank .

## Specifications

25 gallon ATV sprayers

Tank capacity ..... 25 gal  
 Min power supply ..... 12 volt / 10 amp  
 Wiring harness length ..... 8'

Pump:  
 Type.....Diaphragm pump  
 Manufacturer ..... Shurflo®  
 Max pressure .....45 psi  
 Max flow rate ..... 3 gpm

Sprayer:  
 Spraying width (12' boom).....160"  
 Spraying width (20' boomless) .....240"  
 Hose length (for handgun) ..... 15'

Weight:  
 Base unit (empty) .....44 lbs  
 Base unit (full) .....240 lbs  
 12' boom.....32 lbs  
 20' boomless..... 5 lbs

# Introduction

Please read and understand this manual and its instructions and warnings completely before operating the sprayer.

- Familiarize yourself and other operators with the sprayer's components and how all parts are operated.
- Read and understand the chemical manufacturer's labels, warnings, and instructions.
- Know and fulfill all state pesticide applicator license requirements.
- Contact your authorized CropCare® Dealer for help interpreting the owners manual.
- Read and follow ALL of the chemical manufacturer's labels, warnings, and instructions about chemical usage! A material safety data sheet (MSDS) should be provided by the chemical manufacturer. CropCare® is not liable for misuse or mishandling of chemicals before spraying, during spraying, and after spraying.

## Safety

### Safety Alert Symbol

-The safety alert symbol for safety signs & decals that contain one of the three signal words (DANGER, WARNING, & CAUTION) will appear as shown in figure 1.



Figure 1: Safety Alert Symbol

---

### Signal Words

-There are three signal words; DANGER, WARNING, and CAUTION. The signal words bring attention to the existence and relative seriousness of a hazard.

- **DANGER:** The signal word DANGER indicates an imminently hazardous situation which, if not avoided, will result in death or serious injury
- **WARNING:** The signal word WARNING indicates a potentially hazardous situation which, if not avoided, could result in death or serious injury.
- **CAUTION:** The signal word CAUTION indicates a potentially hazardous situation which, if not avoided, may result in minor or moderate injury.

# Safety

## Signal Words

-Additional Signal Words.

- NOTE: The signal word NOTE provides information on operator safety and operator tips.
- IMPORTANT: The signal word IMPORTANT indicates a recommended action or a restriction that will ensure correct equipment operation and performance.

# Safety



## General Guidelines

Every year many unnecessary accidents occur due to improper equipment handling and a disregard for safety precautions. You, the operator, can avoid accidents by observing the precautions listed in this section.

- The operator should be a responsible adult. Do not allow persons to operate this sprayer until they have displayed a thorough understanding of sprayer safety precautions and operational use!
- All operators must also fulfill state pesticide applicator license requirements!
- Never attempt to operate this sprayer when under the influence of alcohol or drugs.
- The best defense against accidents is a careful and responsible operator.
- A chemical warning decal and an owner's manual warning decal are located on the sprayer's tank. (Figure 1). Be aware of their location. Always replace any warning or safety decals that are not legible or are missing.
- When transporting the sprayer on public roads, always follow state and local regulations regarding safety and transportation requirements. Use the necessary lights and slow moving vehicle (SMV) emblems.
- If there is any portion of this manual that you do not fully understand, please contact the original retailer of this product.



Figure 1: Chemical Warning / Read Owner's Manual Decal



## Before Operation

- Carefully study and understand this owner's manual.
- Read and follow chemical manufacturer's labels, warnings, and instructions! A material safety data sheet (MSDS) should be provided by the chemical manufacturer.
- To avoid injury from chemical hazards, wear the proper protective clothing. Each chemical manufacturer's clothing requirements are listed under the "Personal Protective Equipment (PPE)" section in the chemical instructions.
- Do not wear loose-fitting clothing which may catch in moving parts.
- Never exceed the ATV or utility vehicle manufacturer's load rating.
- Give the sprayer a visual inspection for any worn parts, loose bolts, or other visible problems, and make the necessary repairs. See the "Maintenance Instructions" section for instructions.
- Make sure the area is clear of any people or obstructions before using the sprayer.
- Have all operators practice operating the sprayer and its attachments, using clean water only, until all persons are completely capable of safe operation.



## During Operation

- Always be aware of bystanders, particularly children! Always look before moving the sprayer or the ATV.
- No passengers are allowed on or in the ATV or sprayer at anytime.
- Keep hands and body parts clear of all moving parts.
- Be aware of dangerous terrain such as holes, slopes, drop-offs, banks, rocks, and hidden hazards.
- Operate the ATV and sprayer up and down slopes, not across.
- Allow for sprayer boom length when making turns.
- Never leave running equipment unattended!
- Remember that accidents can even happen to seasoned operators. Always take your time and follow all safety instructions.



## Following Operation

- Following operation, stop ATV unit, set brakes, shut off engine, and remove ignition key.
- Store the sprayer away from human and livestock activity.
- Park the sprayer on a hard level surface
- Do not permit children to play on or around sprayer.



## Pump Safety Precautions

- Never pump flammable or explosive fluids such as gasoline, fuel oil, kerosene, etc.
- NOTE: The pump may be run dry for limited periods of time without resulting in damage.
- Always disconnect the power to the pump when working on the pump. Failure to do this could result in electrical shock.

# Installation

This sprayer is designed to be mounted on the rack or on the back of most ATVs and utility vehicles. Mounting the sprayer correctly and securely will ensure accurate, consistent and safe spraying.

## Base Unit

1. Before installing your sprayer, make sure that the sprayer unit does not exceed the ATV manufacturer's load rating. See "Specifications" section for weight of the product.
2. In most cases, the sprayer unit is placed on the rear rack of the ATV and is securely strapped down. In a more permanent situation the sprayer unit could also be bolted down. Regardless of how the sprayer is mounted, it is essential that sprayer is properly secured (Figure 3).

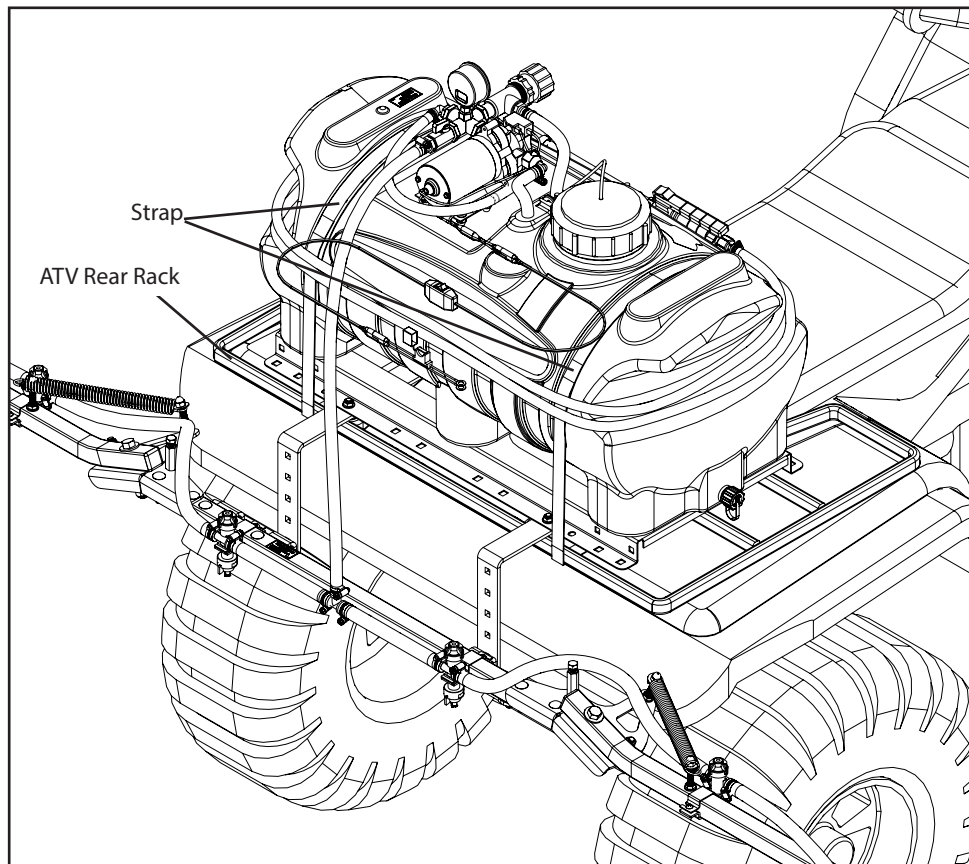


Figure 3: Mounting the sprayer

# Installation

## Wiring Harness

1. The wiring harness needs to be connected to a DC power source (vehicle battery) or a power access point providing at least 12 volts & 10 amps of current to the ring terminals on the fuse harness (3) (Figure 1). NOTE: Make sure that the selected power source provides the adequate power requirements as stated above. Inadequate power can cause problems and performance issues with the pump.
2. Connect the red wire to the positive terminal on the vehicle's battery or other alternate power source positive terminal. Proceed to connect the black wire to the negative terminal of the vehicle's battery or a good ground source. NOTE: The fused wire harness (3) (Figure 1) can be unplugged from the switch harness (2) (Figure 8) and be left attached to the battery or power source for convenience purposes.
3. Mount the switch (2) (Figure 1) in a location that is easily accessible for operation on the vehicle. Make sure to secure the switch so that it cannot fall out of place or become entangled and cause damage. NOTE: Use caution when routing the wiring harness to avoid areas where the wires could become pinched, rubbed, or exposed to excessive heat.

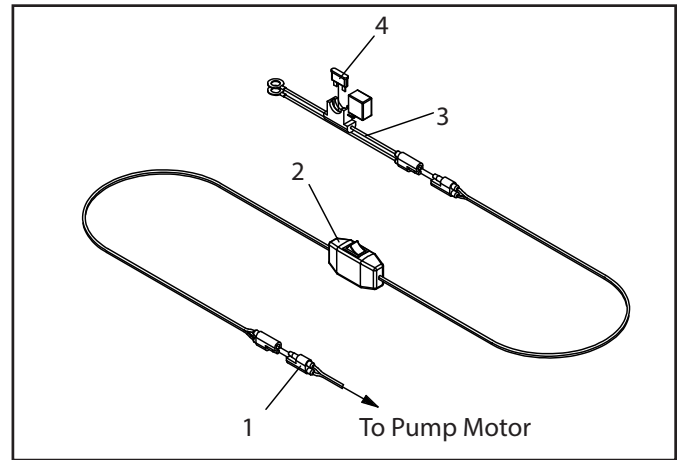


Figure 1: Wiring Harness

Wiring Harness			
Ref #	Qty.	Part Number	Description
1	1	--	Motor Plug End
2	1	SPT-SWH-9615A-16G	Harness, Wiring 8 Ft w/ Switch
3	1	SPT-BCG-1215A-16G	Harness, Battery Connector w/15A Fuse
4	1	ATC-15	Fuse, 15 Amp Buss

# Calibrating the Sprayer

**IMPORTANT:** All calibration needs to be done with water only!

When spraying with the boom, the sprayer must be calibrated to ensure proper spray coverage. Before calibrating the sprayer, it is important to familiarize yourself with the operating instructions (page 10). The calibration process is simplified when broken down into the following three steps:

1. Calculate the speed of the ATV or utility vehicle.
2. Determine the nozzle size and consult the calibration chart for the desired or instructed Gallons per Acre (GPA).
3. Set the pressure accordingly using the relief valve.

## 1. Calculating the Speed

It is important to determine what speed your ATV will be traveling at while spraying. While some ATVs may have speedometers, it is still recommended that speed be calculated for all ATVs for accuracy purposes. To determine the speed follow these four steps:

1. Measure a 200 foot or 300 foot distance on a field or a surface similar to where you will be spraying.
2. Drive the equipment and sprayer (half-full is optimal) across the measured distance at a constant rate of speed. This should be a comfortable speed for spraying.
3. Have someone measure the amount of time (in seconds) it takes to travel the measured distance. **NOTE:** Be sure to maintain a constant speed while measuring the time.
4. Speed can be calculated by entering your data into the equation  $\text{Speed (mph)} = (\text{Distance (ft)} \times 60) / (\text{Time (seconds)} \times 88)$  or by consulting the table to the left.

Speed in MPH	Time required (seconds) to travel a distance of:	
	200 feet	300 feet
1.0	136	205
1.5	91	136
2.0	68	102
2.5	55	82
3.0	45	68
3.5	39	58
4.0	34	51
4.5	30	45
5.0	27	41
5.5	25	37
6.0	23	34
6.5	21	31
7.0	19	29

**NOTE:** It is helpful for future references to record the exact RPM and gear used to find your speed.

## 2. Determining Nozzle Size/Using Calibration Chart

The spray nozzles on your sprayer are color-coded to match up with the calibration charts (page 10). After you have determined your nozzle size, refer to the calibration chart. Using your ATV speed, nozzle size, and desired gallons per acre (GPA), find the pressure (psi) necessary to achieve your GPA.

**NOTE:** A lower pressure setting will result in less spray drift.

**Example:** Assume you have found your ATV speed to be 5 MPH, your nozzles are yellow (XR11002), and you want to spray 10 GPA. Upon looking at the chart, you find that you should set the sprayer's pressure at about 30 psi in order to apply 10 GPA.

# Calibrating the Sprayer

## 3. Adjusting the Sprayer Pressure

After determining the correct pressure setting, the sprayer must be adjusted to that pressure setting.

This is done by adjusting the Pressure Relief Valve (2) (Figure 1), which controls the sprayer's pressure, and is located in front of the pressure gauge (1) (Figure 1).

Adjust the Pressure Relief Valve and watch the pressure gauge until it reads the correct pressure found from step 2 on the previous page.

The sprayer is now calibrated for spraying.

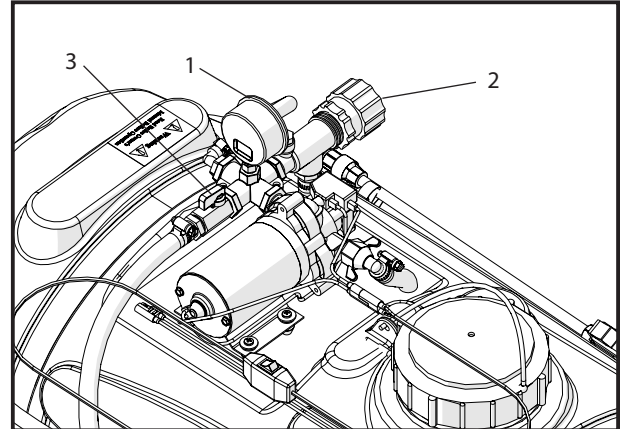


Figure 1: Adjusting the Sprayer Pressure

## Boom Calibration Chart

Tip Size	PSI	GPM of one nozzle	Gallons Per Acre (GPA)			
			3 MPH	4 MPH	5 MPH	6 MPH
XR110015 (Green)	15	0.092	9.2	6.8	5.5	4.6
	20	0.11	10.8	8.2	6.5	5.4
	30	0.13	12.8	9.7	7.7	6.4
	40	0.15	14.8	11.1	8.9	7.4
XR11002 (Standard size) (Yellow)	15	0.12	11.8	8.9	7.1	5.9
	20	0.14	13.8	10.4	8.3	6.9
	30	0.17	16.8	12.6	10.1	8.4
	40	0.20	19.8	14.9	11.9	9.9
XR110025 (Lavender)	15	0.15	14.8	11.1	8.9	7.4
	20	0.18	17.8	13.4	10.7	8.9
	30	0.22	21.8	16.3	13.1	10.9
	40	0.25	24.8	18.6	14.9	12.4

NOTE: Flow rates are calculated using water.

## Boomless Nozzle Calibration Chart

Tip Size	PSI	GPM of two nozzles	Spray Width in Feet		Gallons Per Acre 24" Height				Gallons Per Acre 36" Height			
			24" Height	36" Height	3 MPH	4 MPH	6 MPH	8 MPH	3 MPH	4 MPH	6 MPH	8 MPH
1/4XP10 (Orange)	20	1.42	17	20	13.8	10.3	6.9	5.2	11.8	8.8	5.9	4.4
	30	1.74	20	22	14.4	10.8	7.2	5.4	13.0	9.8	6.5	4.9
	40	2.00	22	25	15.0	11.3	7.5	5.6	13.2	9.9	6.6	5.0

NOTE: Flow rates are calculated using water.

# Operating Instructions

**IMPORTANT:** Before spraying, read this entire manual and know all safety precautions. Always take your time and be alert when operating your sprayer in order to avoid an accident.

## Spraying with the Boom

1. Calibrate the sprayer using the preceding calibration instructions and chart (page 11-12). This will determine what pressure to spray at in order to achieve the desired gallons per acre (GPA).
2. Fill the tank with some water in order to set the pressure and test for leaks.
3. Prepare the sprayer for spraying by closing the ball valve (3) in the boom supply line (Figure 1, pg 12).
4. Start the ATV and engage the pump by turning on the power switch (2) (Figure 1, pg 10) on the wiring harness. Check the sprayer to be sure that there are no leaks in any of the hoses.
5. Using the relief valve (2) (Figure 1, pg 12), adjust the sprayer's pressure to the calculated pressure rating found when you calibrated your sprayer. When you open the boom supply line valve you may need to readjust the pressure.
6. Turn off the pump using the power switch (2) (Figure 1, pg 10) on the wiring harness.
7. You may now fill the tank with the correct amount of water and chemicals that is recommended by the chemical being used.
8. After the tank is full, close the boom supply valve (3) (Figure 1, pg 12), engage the pump by turning on the power switch (2) (Figure 1, pg 10) and allow the water to circulate to ensure proper mixing of the chemicals and water. You are now ready to begin spraying.
9. Upon arriving at the spraying location, unfold the boom wings, engage the pump by turning on the power switch (2) (Figure 1, pg 10), open the boom supply valve (3) (Figure 1, pg 12), and make sure the pressure setting is correct.

**NOTE:** Since the maximum pump pressure is 45 psi, setting the pressure above 45 psi will cause the pump to pulsate on and off.

## Spraying with the Spray Gun

1. Fill the tank with some water in order to set the pressure and test for leaks.
2. Prepare the sprayer for spraying by closing the ball valve (3) (Figure 1, pg 12) in the boom supply line
3. Start the ATV and engage the pump by turning on the power switch (2) (Figure 1, pg 10) on the wiring harness. Check the sprayer to be sure that there are no leaks in any of the lines.
4. Adjust the sprayer's pressure using the relief valve (2) (Figure 1, pg 12) to your desired setting
5. Turn off the pump using the power switch (2) (Figure 1, pg 10) on the wiring harness.
6. You may now fill the tank with the correct amount of water and chemicals recommended by the chemical being used.
7. After the tank is full, engage the pump by turning on the power switch (2) (Figure 1, pg 10) and allow the water to circulate to ensure proper mixing of the chemicals and water. You are now ready to begin spraying.
8. Upon arriving at the spraying location, engage the pump, and make sure the pressure setting is correct. Press the trigger on the spray gun to engage the gun. **NOTE:** The tip at the end of the gun can be turned to adjust the spray pattern.

# Operating Instructions

## Following Operation

1. **IMPORTANT:** Thoroughly rinse the sprayer of any chemical residue. It is recommended to fill the tank with fresh water and engage the spray gun and boom until the system is entirely free of chemical residue.
2. **WARNING:** Do not rinse the sprayer in an area if other humans, animals, or sensitive plants are present and could come in contact with chemical residue.
3. Store the sprayer in a location where it will be away from human or animal activity. Do not allow children to play on or near the sprayer.

# Maintenance Instructions

## Routine Maintenance

**IMPORTANT:** Perform routine maintenance on your sprayer before and after each use. Good maintenance practices will help to guard against any unnecessary sprayer breakdowns or accidents.

1. It is recommended to perform a visual and physical inspection for any worn parts, loose bolts, or other visible problems. Make all necessary repairs before spraying. Contact the original retailer for instructions on ordering parts and technical help.
2. **IMPORTANT:** Rinse the pump and all components by running water through the system. Fill the tank with a sufficient amount of fresh water and engage both the spray gun and the boom. Rinsing the pump with fresh water will greatly improve the life of the pump.
3. Always follow all pump safety precautions and warnings (See page 6). Following these guidelines will help increase the longevity of the pump.
4. The suction strainer located on the end of suction hose (REF # 1, pg 16) should be inspected and rinsed off on a regular basis.

**NOTE:** Due to normal wear, Teejet® recommends that you replace your sprayer nozzles after every spraying season. Nozzle replacement will ensure accurate spraying performance.

# Maintenance Instructions

## Winterizing your Sprayer

It is essential that you winterize your sprayer to avoid damage and allow for optimal performance. The winterization process should be performed before freezing conditions or after each season of use. Failure to winterize your sprayer will void the manufacturer's warranty and could cause damage to the sprayer.

1. Verify that the tank is empty and rinsed out. Pour 1/2 to 1 gallon of RV non-toxic antifreeze into the tank. **WARNING:** Do not use standard automotive antifreeze (ethylene glycol) as it can be harmful to humans, animals, crops, and the environment.
2. Engage the pump by turning on the power switch (2) (Figure 1, pg 10), then spray with the boom and the spray gun. **NOTE:** Be sure that the antifreeze has been pumped through the entire system including all spray nozzles.
3. Store the sprayer in a dry location away from the elements.
4. Before spraying in the spring it is recommended to flush the sprayer with fresh water to cleanse it of the antifreeze and any other buildup. **NOTE:** Perform a thorough inspection of all sprayer components before spraying.

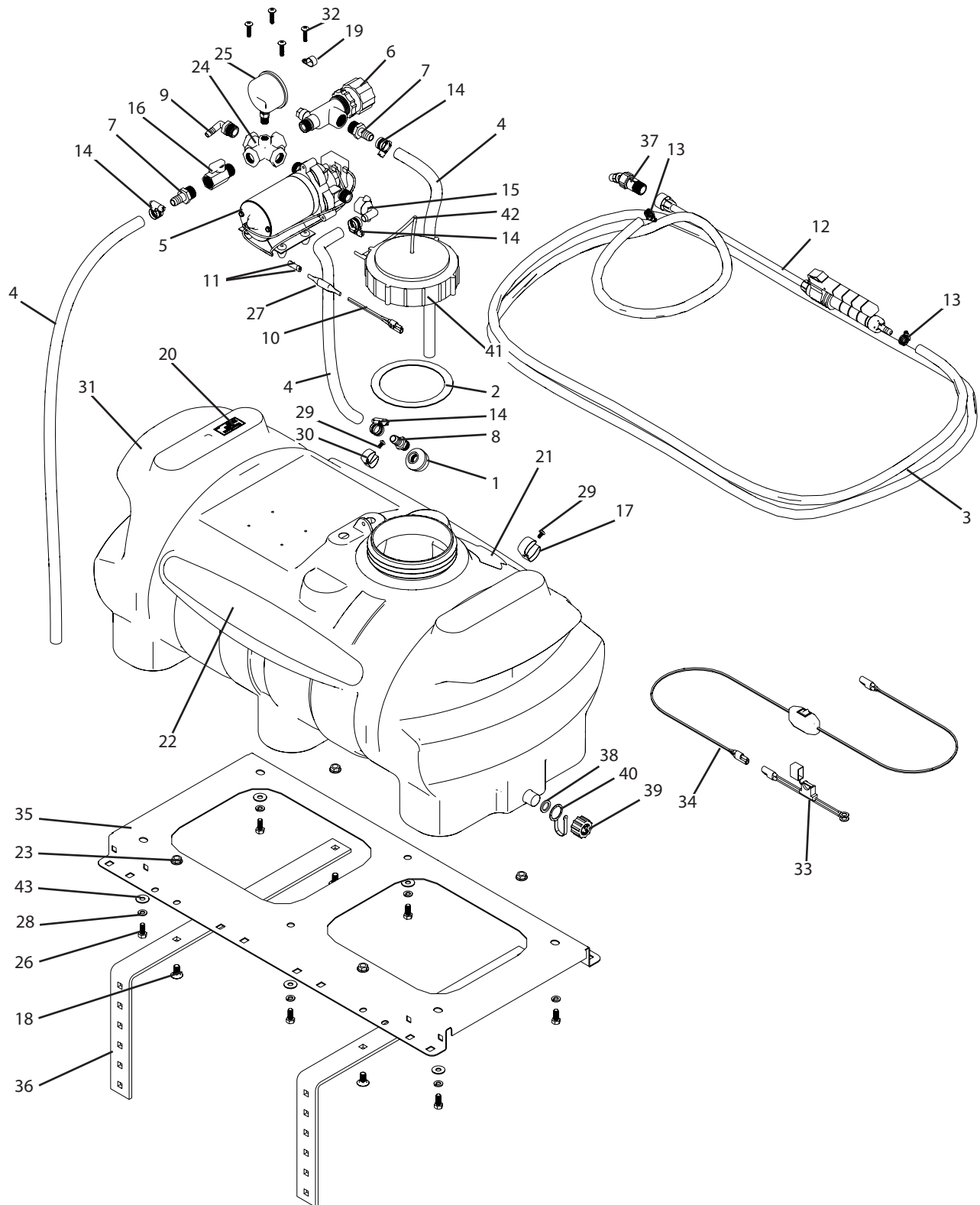
**IMPORTANT:** Do not, under any circumstances, run any petroleum based substance (such as diesel fuel) through the sprayer. This will cause damage to sprayer components and will void the manufacturer's warranty.

## Troubleshooting

As you use your sprayer, it is possible that you will encounter minor problems that can be easily fixed. The following problems and respective causes and solutions should cover most of the potential problems that you may face. If you are having problems please attempt to use this troubleshooting section to solve the problem. If you are unable to fix the problem please contact the original retailer of this product for service.

Problems/Symptoms	Possible Causes	Solutions
Low Rate of Flow	Suction Strainer is partially clogged	Remove the suction strainer and rinse
	Tip strainer is clogged	Remove tip strainer and rinse
	Pump valves are damaged/bad	Replace the valves or contact the original retailer for repairs
	Low voltage	Use a power source with at least 10 amps and 12 volts
Pump Will Not Prime	Suction line is clogged	Inspect the suction line for debris
	Suction strainer is clogged	Remove the suction strainer and rinse
	Pump is damaged from chemicals not being properly rinsed out	Contact the original retailer for service and repairs
Pump Will Not Run	Fuse is blown	Replace the fuse on the wiring harness
	Incorrect voltage	Ensure that a 10 amp, 12 volt power source is being used
	Pump pressure switch is malfunctioning	Contact the original retailer for service and repairs
No Spray Flow	Spray tip is clogged	Remove the spray tip and rinse out
	Suction strainer is clogged	Remove the suction strainer and rinse
	Nozzle tip strainer is clogged	Remove the nozzle tip strainer and rinse
Pump Pulsates On and Off	Pressure is set above pump limit (45 psi)	Lower the pressure with the relief valve
	Defective pump demand switch	Contact the original retailer for service and repairs

## Base Unit Breakdown



# Breakdowns & Parts Lists

## Base Unit Parts List

Ref#	Qty.	Part Number	Description
1	1	10416D	Strainer, Suction 3/8" FPT 40 Mesh
2	1	11042	Gasket, EPDM for 5" Lid
3	16 FT	1206	Hose, EPDM Rubber 3/8" 200 PSI
4	6.34 FT	1208	Hose, EPDM Rubber 1/2" 200 PSI
5	1	2088-343-135 *	Pump, ShurFlo 12V 3 GPM Vi-Santo
6	1	2312012PP *	Valve, Relief 1/2" NPT Poly 150 PSI piston-type
7	2	3A1212	Adapter, Hose 1/2" MPT x 1/2" HB
8	1	3A3812	Fitting, Hose 3/8" MPT x 1/2" HB
9	1	3EL1238	Elbow, Hose 90° 1/2" MPT x 3/8" HB
10	1	47965	Extension, Wiring Harness 12" 14 GA
11	2	506346	Connector, Wire Butt Terminal 16-14 Ga Insulated
12	1	5080015PP406	Spray Gun, TriggerJet 15" Poly Ext 3/8" HB Inlet X18 Tip
13	2	62606	Hose Clamp, Narrow 5/16"-7/8" SS
14	5	6806052	Hose Clamp, 1/2" - 29/32" SS
15	1	803401	Adapter, Hose 90° 1/2" FPT x 1/2" HB
16	1	90FMB12	Valve, Ball 1/2" FPT x 1/2" MPT 300PSI
17	1	C13201	Clip, Medium Grip
18	4	CB38*34G5	Bolt, Carriage 3/8-16 x 3/4" Gr 5
19	1	DC2510	Clamp, Loom 5/8" Nylon
20	1	DE188	Decal, ATX25 Model and Revision
21	1	DE210	Decal, MSDS Warning and Read Owner's Manual
22	1	DE212	Decal, ATX25
23	4	FN38	Nut, Flange 3/8-16
24	1	GCR1214	Cross, Gauge Port 1/2" FPT 1/4" FPT Poly
25	1	GG60	Gauge, 2-1/2" Liquid Filled 60 PSI
26	6	H5C516*34	Bolt, Hex 5/16-18 x 3/4" Gr 5
27	1	HST38*3	Heat shrink tubing, 3/8" x 3" long
28	6	LW516	Washer, Lock 5/16"
29	2	MR1024*38S	Screw, Machine Rd Hd 10-24 x 3/8" SS
30	1	N189472	Clip, Gripper 3/8" - 5/8" Zinc
31	1	T1437	Tank, 25 Gallon ATX25
32	4	SBT316*1	Bolt, Stove Truss Head 10-24 x 1"
33	1	SPT-BCG-1215A-16G	Harness, Battery Connector 14G w/15A Fuse
34	1	SPT-SWH-9615A-16G	Harness, Wiring 8 Ft 14G w/ Switch
35	1	T1430	LGX25-ATX25 Frame
36	2	T1434	ATX25 ATV, Boom Mount
37	1	38720PPBX18 ****	Adjustable spray nozzle, #18
38	1	10960 **	Gasket, Tank Outlet Cap
39	1	19024 **	Cap, Tank Outlet
40	1	19025 **	Tether, Cap Tank Outlet
41	1	10035 **	Lid, Tank 5" w/ out Lanyard
42	1	10873 **	Lanyard, 12"
43	6	FW516	Washer, Flat 5/16"

\* Additional part breakdowns available.

\*\* Included with tank part number (T1416)

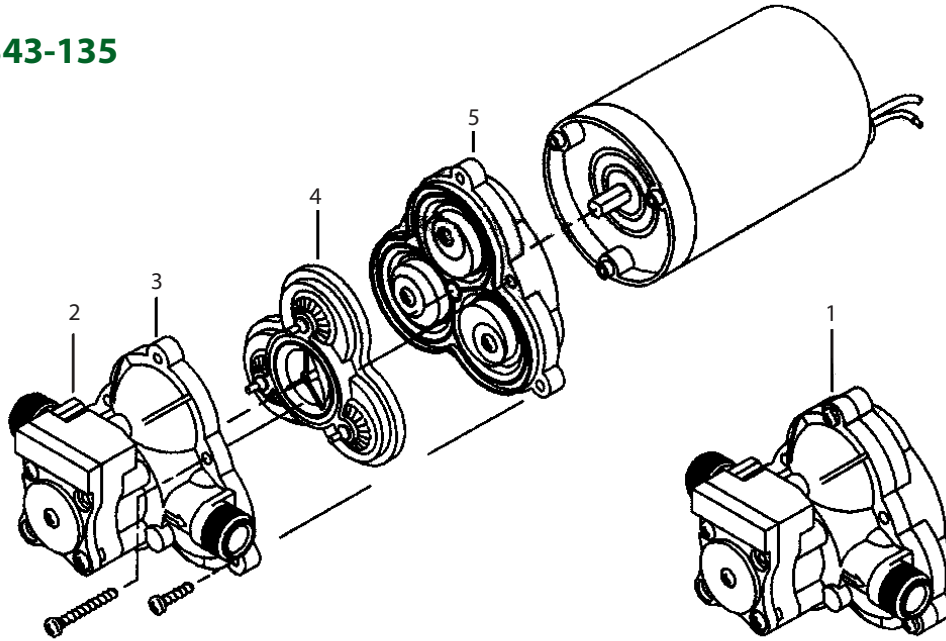
\*\*\* Under heat shrink tubing on pump.

\*\*\*\* Included with spray gun part number (5080015PP406).

# Breakdowns & Parts Lists

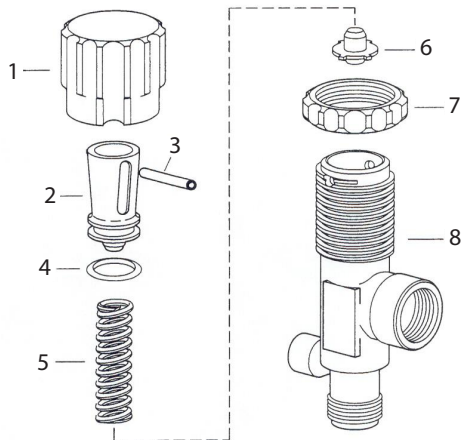
## Shurflo® Pump Breakdown & Parts List

Model: 2088-343-135



Ref #	Qty.	Part Number	Description
1	1	94-236-11	Complete pump head
2	1	94-230-36	Switch kit, 45 psi
3	1	94-231-30	Upper housing kit (does not include switch)
4	1	94-232-05	Viton valve kit
5	1	94-238-03	Drive kit with diaphragm

## Relief Valve Breakdown & Parts List



Ref #	Qty.	Part Number	Description
1	1	CP23122-NY	Nylon adjusting cap
2	1	--	Polypropylene spring retainer
3	1	-- *	Stainless retaining pin
4	1	-- *	EPDM rubber O-ring
5	1	-- *	Stainless spring
6	1	--	Polypropylene guide seat
7	1	CP23123-PP	Poly lock ring
8	1	CP23128-PP	Polypropylene body, 1/2" MNPT

\* Spare parts kit PK-AB23120-KIT includes ref. #'s 3, 4, 5

# CropCare<sup>®</sup> Limited Warranty

Model #: ATX25

## Warranty Coverage

CropCare<sup>®</sup> hereby provides a Limited Three (3) Year Warranty on ATX Sprayers, manufactured by CropCare<sup>®</sup>. These products are warranted by CropCare<sup>®</sup> against any manufacturer's defects in any of the sprayer's components in the 36 months following the original date of purchase.

Defective components will be repaired or replaced at the discretion of the manufacturer. It is the responsibility of the purchaser to return warranted components to the manufacturer. This warranty is limited to the repair or replacement of sprayer components only. CropCare<sup>®</sup> is not to be held liable for incidental or consequential damages of any kind. This warranty covers the purchaser of this sprayer and any other owners who own it during the warranty period.

To retain the warranty, the sprayer must be operated and maintained as ascribed by its owner's manual. For warranty service, please have a copy of the purchase invoice available.

## Warranty Is Void if:

1. The sprayer has been subjected to, in the opinion of CropCare<sup>®</sup>, negligent handling, misuse, an accident or if the instructions in the owner's manual were not completely followed.
2. The sprayer's components have been altered in any manner or repairs have taken place with unapproved parts.
3. The sprayer and its components were subject to freezing or freezing conditions. The sprayer must have been winterized as per the maintenance instructions to retain the warranty.
4. A non-compatible chemical was used and/or if the sprayer operator failed to rinse all chemical residue out of the sprayer's components after use.
5. A petroleum-based, oil-based, or flammable product was used and caused damage to the pump, tank, hoses, or any other component.

## Getting Warranty Service

All ATV Sprayer warranty claims must be made through the original retailer. All warranty claims must be submitted with an invoice or a proof of purchase that denotes the purchase date and place of purchase.

## Ordering Parts

Please contact the original retailer to order replacement parts for your product.

# ***CROPCARE***

Manufactured by PBZ LLC  
A Paul B Zimmerman Inc. Company  
[www.CropCareEquipment.com](http://www.CropCareEquipment.com)